

BOX SCORE: \*\*\* FINAL \*\*\*

Date: 03-26-88 Site: State Tourney, Frankfort

Attendance: 3,460

Team: Southern

| NO.    | NAME             | TOTAL FG |     | 3-POINT |     | FT | FTA | REB |    |    | PF | TP | A  | TO | BLK | S  | MIN |  |
|--------|------------------|----------|-----|---------|-----|----|-----|-----|----|----|----|----|----|----|-----|----|-----|--|
|        |                  | FG       | FGA | FG      | FGA |    |     | O   | D  | T  |    |    |    |    |     |    |     |  |
| 24     | Harrison, Lisa   | 12       | 20  | 0       | 0   | 7  | 8   | 2   | 8  | 10 | 1  | 31 | 3  | 3  | 2   | 3  | 31  |  |
| 50     | Collins, Cindy   | 4        | 4   | 0       | 0   | 7  | 8   | 1   | 4  | 5  | 3  | 15 | 3  | 4  | 1   | 3  | 30  |  |
| 55     | Moore, Mioshi    | 2        | 4   | 0       | 0   | 0  | 1   | 0   | 2  | 2  | 1  | 4  | 0  | 0  | 0   | 0  | 27  |  |
| 04     | Burden, Michelle | 2        | 4   | 0       | 0   | 3  | 4   | 1   | 3  | 4  | 2  | 7  | 3  | 2  | 0   | 2  | 31  |  |
| 21     | Woods, Tina      | 2        | 3   | 0       | 0   | 0  | 1   | 1   | 1  | 2  | 3  | 4  | 2  | 4  | 0   | 3  | 28  |  |
| 34     | Grant, Steph.    | 0        | 0   | 0       | 0   | 1  | 2   | 1   | 0  | 1  | 3  | 1  | 1  | 0  | 0   | 0  | 5   |  |
| 05     | Andres, Kim      | 0        | 1   | 0       | 1   | 0  | 0   | 0   | 0  | 0  | 0  | 0  | 0  | 0  | 1   | 4  |     |  |
| 12     | Burden, D.       | 0        | 1   | 0       | 0   | 0  | 0   | 1   | 0  | 1  | 0  | 0  | 0  | 0  | 0   | 0  | 1   |  |
| 15     | Burden, Melissa  | 0        | 1   | 0       | 0   | 0  | 0   | 0   | 0  | 0  | 0  | 0  | 0  | 0  | 0   | 0  | 1   |  |
| 35     | Kiggins, Pam     | 0        | 0   | 0       | 0   | 0  | 0   | 0   | 0  | 0  | 0  | 0  | 0  | 0  | 0   | 0  | 1   |  |
| 10     | Davis, Debbie    | 1        | 1   | 0       | 0   | 0  | 0   | 1   | 0  | 1  | 0  | 2  | 0  | 0  | 0   | 0  | 1   |  |
| TEAM   |                  |          |     |         |     |    |     |     |    |    |    |    |    |    |     |    |     |  |
| TOTALS |                  | 23       | 39  | 0       | 1   | 18 | 24  | 8   | 18 | 26 | 13 | 64 | 12 | 13 | 3   | 12 | 160 |  |

4 Deadball Rebounds

| Percentages: | Game----- | FG | 23/ 39 | 59.0% | 3-PT. | 0/ 1 | 0.0% | FT | 18/ 24 | 75.0%  |
|--------------|-----------|----|--------|-------|-------|------|------|----|--------|--------|
| Period 1     |           |    | 9/ 10  | 90.0% |       | 0/ 0 | 0.0% |    | 1/ 2   | 50.0%  |
| Period 2     |           |    | 8/ 14  | 57.1% |       | 0/ 1 | 0.0% |    | 1/ 3   | 33.3%  |
| Period 3     |           |    | 2/ 6   | 33.3% |       | 0/ 0 | 0.0% |    | 8/ 8   | 100.0% |
| Period 4     |           |    | 4/ 9   | 44.4% |       | 0/ 0 | 0.0% |    | 8/ 11  | 72.7%  |

Team: Ohio County

| NO.    | NAME            | TOTAL FG |     | 3-POINT |     | FT | FTA | REB |    |    | PF | TP | A | TO | BLK | S  | MIN |  |
|--------|-----------------|----------|-----|---------|-----|----|-----|-----|----|----|----|----|---|----|-----|----|-----|--|
|        |                 | FG       | FGA | FG      | FGA |    |     | O   | D  | T  |    |    |   |    |     |    |     |  |
| 14     | Burden, Donna   | 6        | 16  | 0       | 2   | 1  | 3   | 2   | 2  | 4  | 5  | 13 | 2 | 5  | 0   | 5  | 27  |  |
| 24     | Whitten, Steph. | 2        | 8   | 0       | 0   | 0  | 3   | 5   | 3  | 8  | 4  | 4  | 0 | 2  | 0   | 0  | 32  |  |
| 34     | Hawes, Kerri    | 5        | 12  | 0       | 0   | 0  | 0   | 4   | 3  | 7  | 4  | 10 | 0 | 0  | 0   | 1  | 29  |  |
| 10     | Carter, Missy   | 2        | 6   | 0       | 1   | 6  | 6   | 1   | 0  | 1  | 2  | 10 | 3 | 6  | 0   | 5  | 30  |  |
| 12     | Riley, Debra    | 2        | 6   | 0       | 0   | 0  | 0   | 0   | 0  | 0  | 4  | 4  | 0 | 4  | 0   | 0  | 28  |  |
| 42     | Burdin, Rachael | 0        | 0   | 0       | 0   | 0  | 0   | 0   | 2  | 2  | 0  | 0  | 2 | 2  | 0   | 0  | 6   |  |
| 54     | Johnson, M.     | 1        | 1   | 0       | 0   | 2  | 2   | 2   | 0  | 2  | 0  | 4  | 0 | 0  | 0   | 0  | 5   |  |
| 52     | Williams, G.    | 0        | 0   | 0       | 0   | 0  | 0   | 0   | 0  | 0  | 0  | 0  | 0 | 0  | 0   | 0  | 1   |  |
| 30     | Freeman, M.     | 0        | 0   | 0       | 0   | 0  | 0   | 0   | 0  | 0  | 0  | 0  | 0 | 0  | 0   | 0  | 1   |  |
| 40     | Hoagland, A.    | 0        | 0   | 0       | 0   | 0  | 0   | 0   | 0  | 0  | 0  | 0  | 0 | 0  | 0   | 0  | 1   |  |
| TEAM   |                 |          |     |         |     |    |     |     |    |    |    |    |   |    |     |    |     |  |
| TOTALS |                 | 18       | 49  | 0       | 3   | 9  | 14  | 14  | 12 | 25 | 19 | 45 | 7 | 20 | 0   | 11 | 160 |  |

2 Deadball Rebounds

| Percentages: | Game----- | FG | 18/ 49 | 36.7% | 3-PT. | 0/ 3 | 0.0% | FT | 9/ 14 | 64.3%  |
|--------------|-----------|----|--------|-------|-------|------|------|----|-------|--------|
| Period 1     |           |    | 3/ 10  | 30.0% |       | 0/ 0 | 0.0% |    | 2/ 4  | 50.0%  |
| Period 2     |           |    | 4/ 13  | 30.8% |       | 0/ 1 | 0.0% |    | 2/ 3  | 66.7%  |
| Period 3     |           |    | 7/ 13  | 53.8% |       | 0/ 0 | 0.0% |    | 2/ 2  | 100.0% |
| Period 4     |           |    | 4/ 13  | 30.8% |       | 0/ 2 | 0.0% |    | 3/ 5  | 60.0%  |

OFFICIALS: Jackie Cupp, Tom Thompson, Alt.-K. Walker  
 Technicals: None

| SCORE BY PERIODS |                  |
|------------------|------------------|
| Southern         | 19 17 12 16 = 64 |
| Ohio County      | 8 10 16 11 = 45  |

Southern "Lady Trojans" vs Ohio County "Lady Eagles"  
2nd Half Play by Play

Tip off at 10:00 a.m. on 03/26/88 at State Tourney, Frankfort  
Produced by the K.H.S.A.A. Stat Crew with FINCL III

PAGE : 2

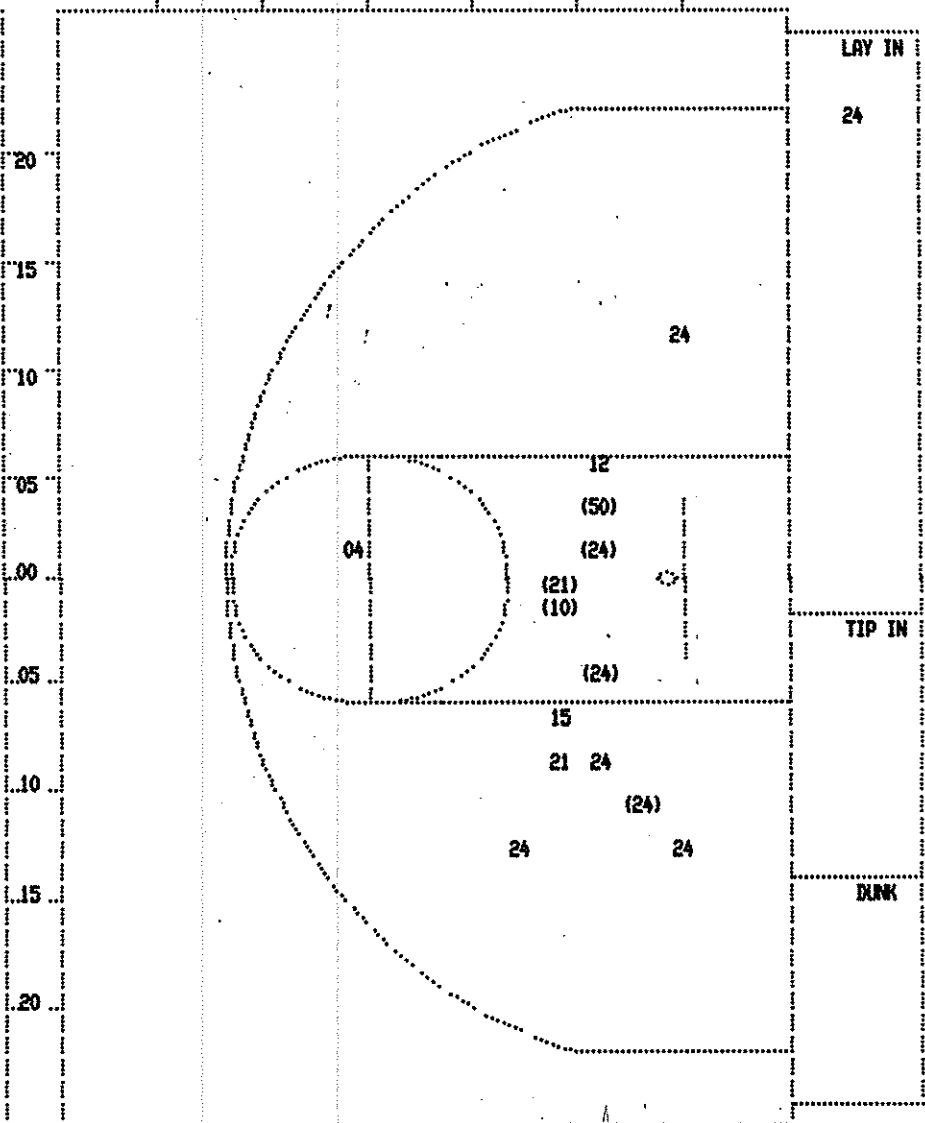
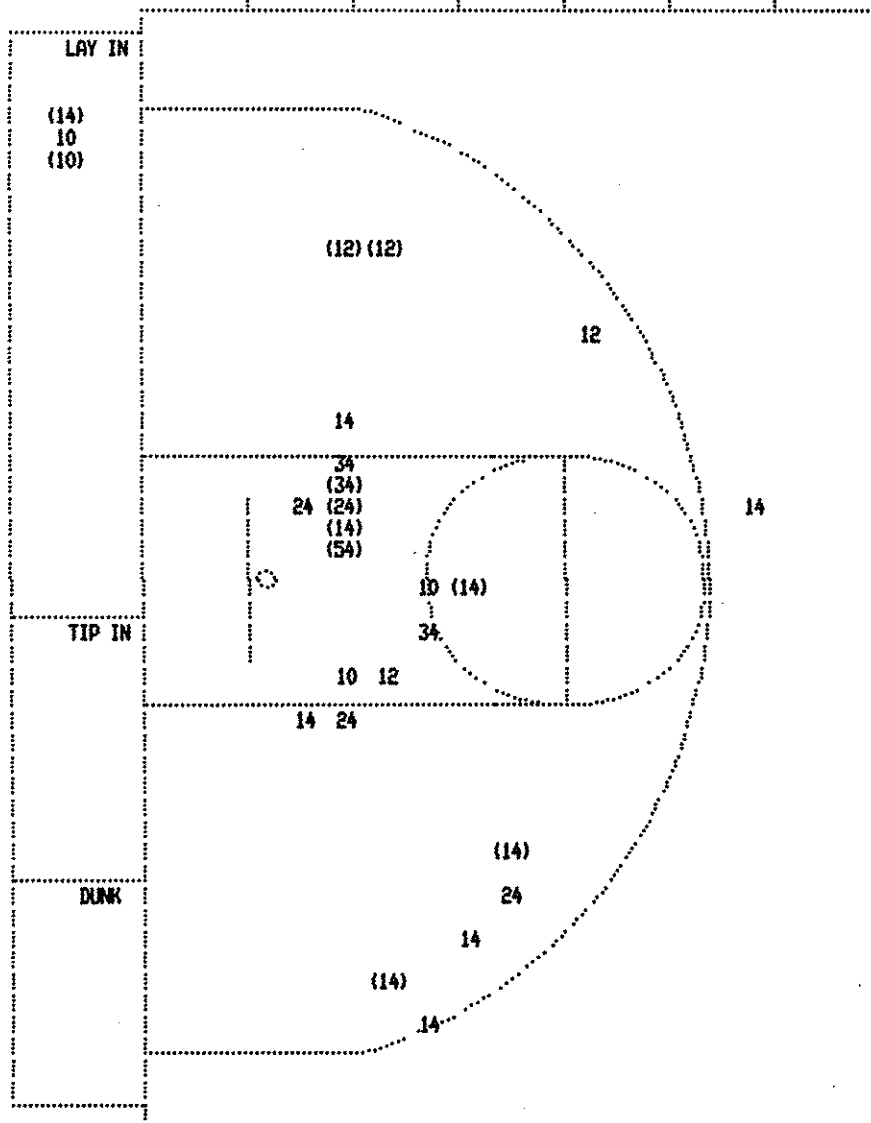
| Player        | Team            | Ohio County                               | Time  | Score  | Southern   | Player   | Team                    |
|---------------|-----------------|---|-------|--|--|--|-------------------------|
| Burden, Donna | Whitten, Steph. | Hawes, Kerri, Carter, Missy, Riley, Debra |       |  | Harrison, Lisa, Collins, Cindy, Moore, Mioshi, Burden, Michelle, Woods, Tina |  |                         |
|               |                 | Ball to Lady Eagles                       |       |  |  |  |                         |
| 1-3           | 33.3%           | 7-11                                      | 63.6% | Burden, Donna, 2 Free Throws missed 1st made 2nd |  |  |                         |
| 4             |                 | 7   |       | Foul on Burden, Donna                            |  |  |                         |
|               |                 |   |       |  | 4 7:49   |  |                         |
|               |                 |   |       |  | 4 7:49 *35-48  |  |                         |
|               |                 |   |       |  | 4 7:03   |  |                         |
|               |                 |   |       |  | 4 7:03 35-50*  | Collins, Cindy, 1 & Bonus made both                                | 5-6 83.3% 12-15 80.0%   |
|               |                 |   |       |  | 4 7:03   |  |                         |
| 1-4           | 25.0%           | 15-37                                     | 40.5% | Sub In: Johnson, M. Out: Burden, Donna           |  |  |                         |
|               |                 |   |       | 16 ft Right Side Jump shot by Riley, Debra       |  |  |                         |
|               |                 |   |       | Assist by Carter, Missy                          |  |  |                         |
| 2             |                 | 6   |       | Foul on Whitten, Steph.                          |  |  |                         |
| 4             |                 | 8   |       |  | 4 6:49 *37-50  |  |                         |
|               |                 |   |       |  |  |  |                         |
|               |                 |   |       |  | 4 6:19   |  |                         |
|               |                 |   |       |  | 4 6:16   | Harrison, Lisa, 1 & Bonus missed 1st                               | 6-7 85.7% 12-16 75.0%   |
|               |                 |   |       |  | 4 5:32   | Foul on Collins, Cindy   | 3 7                     |
| 2-2           | 100%            | 9-13                                      | 69.2% | Johnson, M., 1 & Bonus made both                 |  |  |                         |
|               |                 |   |       | Sub In: Burden, Donna Out: Johnson, M.           |  |  |                         |
|               |                 |   |       |  | 4 5:32 *39-50  |  |                         |
|               |                 |   |       |  | 4 5:32   |  |                         |
|               |                 |   |       |  | 4 5:32 39-52*  | 4 ft Lane Driving by Collins, Cindy                                | 4-4 100% 20-32 62.5%    |
|               |                 |   |       |  | 4 4:37 39-54*  | 3 ft Lane Follow by Harrison, Lisa                                 | 11-18 61.1% 21-34 61.7% |
|               |                 |   |       |  | 4 4:37   |  |                         |
|               |                 |   |       |  | 4 4:37 39-55*  | Harrison, Lisa, 1 Free Throw made                                  | 7-8 87.5% 13-17 76.4%   |
|               |                 |   |       |  | 4 4:11 39-57*  | 4 ft Lane Bank by Harrison, Lisa                                   | 12-19 63.1% 22-35 62.8% |
|               |                 |   |       |  | 4 3:23 *41-57  |  |                         |
| 6-13          | 46.1%           | 16-41                                     | 39.0% | 4 ft Lane Follow by Burden, Donna                |  |  |                         |
|               |                 |   |       |  | 4 2:51   | Sub In: Grant, Steph. Out: Moore, Mioshi                           |                         |
|               |                 |   |       |  | 4 2:17   | Foul on Woods, Tina  | 4 8                     |
|               |                 |   |       |  | 4 2:15   |  |                         |
|               |                 |   |       |  | 4 2:12   | Woods, Tina, 1 & Bonus missed 1st                                  | 0-1 00.0% 13-18 72.2%   |
|               |                 |   |       |  | 4 1:56   |  |                         |
|               |                 |   |       |  | 4 1:56 41-59*  | Burden, Michelle, 1 & Bonus made both                              | 2-2 100% 15-20 75.0%    |
|               |                 |   |       |  | 4 1:48 *43-59  |  |                         |
|               |                 |   |       |  | 4 1:36   |  |                         |
|               |                 |   |       |  | 4 1:36 43-60*  | Burden, Michelle, 2 Shot Intentional missed 1st made 2nd           | 3-4 75.0% 16-22 72.7%   |
|               |                 |   |       |  | 4 1:21   |  |                         |
|               |                 |   |       |  | 4 1:21   |  |                         |
|               |                 |   |       |  | 4 1:21 43-62*  | Collins, Cindy, 1 & Bonus made both                                | 7-8 87.5% 18-24 75.0%   |
|               |                 |   |       |  | 4 1:13   | Foul on Grant, Steph.  | 3 9                     |
|               |                 |   |       |  | 4 1:13   |  |                         |
|               |                 |   |       |  | 4 1:13   | Sub In: Burden, D. Out: Collins, Cindy                             |                         |
|               |                 |   |       |  | 4 1:13   |  |                         |
|               |                 |   |       |  | 4 1:10 *45-62  |  |                         |
|               |                 |   |       |  | 4 0:41   | Subs In: Burden, Melissa, Andres, Kim, Kiggins, Pam, Davis, Debbie |                         |
|               |                 |   |       |  |  | Out: Burden, Michelle, Woods, Tina, Harrison, Lisa, Grant, Steph.  |                         |
| 0-3           | 00.0%           | 9-14                                      | 64.2% | Whitten, Steph., 1 & Bonus missed 1st            |  |  |                         |
| 1-1           | 100%            | 18-49                                     | 36.7% | 3 ft Lane Follow by Johnson, M.                  |  |  |                         |
|               |                 |   |       |  | 4 0:35 45-64*  | 4 ft Lane Follow by Davis, Debbie                                  | 1-1 100% 23-38 60.5%    |

Southern "Lady Trojans" vs Ohio County "Lady Eagles"  
2nd Half Play by Play

Tip off at 10:00 a.m. on 03/25/88 at State Tourney, Frankfort  
Produced by the K.H.S.A.A. Stat Crew with FINAL III™

PAGE : 1

| Player   | Team  | Ohio County  | Time   | Score  | Southern  | Player  | Team              |
|--|-------|--|--------|--------|---|---|-------------------|
| Burden, Donna, Whitten, Steph., Hawes, Kerri, Carter, Missy, Riley, Debra<br>Ball to Lady Eagles |       |  | 3 7:52 |        | Foul on Woods, Tina                                   | 2   | 1                 |
| 1  | 1     | Foul on Whitten, Steph.  | 3 7:40 |        | Foul on Harrison, Lisa                                | 1   | 2                 |
| 2-8  | 25.0% | 8-25 32.0%   | 3 7:24 |        |   |   |                   |
|  |       | 8 ft Lane Driving by Burden, Donna   | 3 7:24 | 18-38* | Harrison, Lisa, 2 Free Throws made both               | 2-2   | 100% 4-7 57.1%    |
|  |       |  | 3 7:12 | *20-38 |   |   |                   |
|  |       |  | 3 6:47 |        | Foul on Burden, Michelle                              | 2   | 3                 |
|  |       |  | 3 6:47 |        | Foul on Burden, Michelle                              | 3   | 4                 |
|  |       | REB: 14 A: 3 BLK: 0 TO: 14 PF: 1<br>S: 5 FT: 4-7 57.1% FG: 8-25 32.0%                    | 3 6:47 |        | Southern No. 1  | REB: 12 A: 11 BLK: 2 TO: 5 PF: 4<br>S: 8 FT: 4-7 57.1% FG: 17-24 70.8%  |                   |
|  |       |  | 3 6:31 | 20-40* | 4 ft Lane Follow by Woods, Tina                       | 2-2   | 100% 18-26 69.2%  |
| 3-9  | 33.3% | 9-27 33.3%   | 3 5:51 |        |   |   |                   |
| 2  | 4     | Sub In: Burdin, Rachael Out: Carter, Missy<br>18 ft Left Side Jump shot by Burden, Donna | 3 5:14 | *22-40 |   |   |                   |
| 3  | 2     | Assist by Burdin, Rachael  | 3 5:06 |        |   |   |                   |
|  |       | Foul on Burden, Donna  | 3 5:06 |        |   |   |                   |
| 4-10   | 40.0% | 10-28 35.7%  | 3 4:51 | *24-40 |   |   |                   |
|  |       | Sub In: Carter, Missy Out: Burdin, Rachael   | 3 4:47 |        | Foul on Woods, Tina                                   | 3   | 5                 |
|  |       | Layup Off Fast Break by Burden, Donna  |        |        |   |   |                   |
|  |       | REB: 14 A: 4 BLK: 0 TO: 16 PF: 2<br>S: 9 FT: 4-7 57.1% FG: 10-28 35.7%                   | 3 4:47 |        | Southern No. 2  | REB: 14 A: 11 BLK: 2 TO: 9 PF: 5<br>S: 10 FT: 4-7 57.1% FG: 18-26 69.2% |                   |
| 6-6  | 100%  | 6-9 66.6%  | 3 4:47 | *26-40 |   |   |                   |
| 2-4  | 50.0% | 11-30 36.6%  | 3 4:32 | *28-40 |   |   |                   |
| 3  | 3     | Carter, Missy, 2 Free Throws made both   | 3 4:22 |        |   |   |                   |
| 3  | 4     | Follow Layup by Carter, Missy  | 3 4:11 |        |   |   |                   |
|  |       | Foul on Riley, Debra   | 3 4:11 | 28-42* | Collins, Cindy, 2 Free Throws made both               | 3-4   | 75.0% 6-9 66.6%   |
|  |       | Foul on Hawes, Kerri   | 3 3:41 | 28-44* | 10 ft Right Base Line Turnaround by<br>Harrison, Lisa | 10-14   | 71.4% 19-27 70.3% |
|  |       |  |        |        | Assist by Burden, Michelle                            | 3   | 12                |
| 2  | 5     | Foul on Whitten, Steph.  | 3 3:09 |        |   |   |                   |
| 2-6  | 33.3% | 12-33 36.3%  | 3 3:09 | 28-46* | Harrison, Lisa, 2 Free Throws made both               | 4-4   | 100% 8-11 72.7%   |
| 5-11   | 45.4% | 13-34 38.2%  | 3 2:52 | *30-46 |   |   |                   |
| 1  | 5     | 4 ft Lane Turnaround by Whitten, Steph.  | 3 2:19 | *32-46 |   |   |                   |
| 3  | 6     | 16 ft Left Side Jump shot by Burden, Donna   |        |        |   |   |                   |
|  |       | Assist by Carter, Missy  | 3 1:45 |        |   |   |                   |
|  |       | Foul on Whitten, Steph.  | 3 1:45 |        |   |   |                   |
|  |       | Sub In: Johnson, M. Out: Burden, Donna   | 3 1:45 | 32-48* | Harrison, Lisa, 2 Free Throws made both               | 6-6   | 100% 10-13 76.9%  |
| 5-12   | 41.6% | 14-35 40.0%  | 3 1:29 | *34-48 |   |   |                   |
|  |       | 6 ft Lane Bank by Hawes, Kerri   |        |        |   |   |                   |



| Ohio County     |            | Player          |            | Player     |         |
|-----------------|------------|-----------------|------------|------------|---------|
| 14 - Burden, Do | 5/10 50.0% | 54 - Johnson, M | 1/1 100.0% |            |         |
| 24 - Whitten, S | 1/4 25.0%  |                 |            |            |         |
| 34 - Hawes, Ker | 1/3 33.3%  |                 |            |            |         |
| 10 - Carter, Mi | 1/4 25.0%  |                 |            |            |         |
| 12 - Riley, Deb | 2/4 50.0%  |                 |            |            |         |
| Layups          | 1-9 Ft     | 10-15 Ft        | Over 15 Ft | 3 Pointers | Total   |
| 2 / 3           | 5 / 14     |                 | 4 / 7      | 0 / 2      | 11 / 26 |
| 66.7%           | 35.7%      |                 | 57.1%      | 0.0%       | 42.3%   |

| Southern         |            | Player          |            | Player     |        |
|------------------|------------|-----------------|------------|------------|--------|
| 24 - Harrison, J | 3/8 37.5%  | 12 - Burden, D. | 0/1 0.0%   |            |        |
| 50 - Collins, C  | 1/1 100.0% | 15 - Burden, Me | 0/1 0.0%   |            |        |
| 04 - Burden, Mic | 0/1 0.0%   |                 |            |            |        |
| 21 - Woods, Tin  | 1/2 50.0%  |                 |            |            |        |
| 10 - Davis, Deb  | 1/1 100.0% |                 |            |            |        |
| Layups           | 1-9 Ft     | 10-15 Ft        | Over 15 Ft | 3 Pointers | Total  |
| 0 / 1            | 5 / 9      | 1 / 5           |            |            | 6 / 15 |
| 0.0%             | 55.6%      | 20.0%           |            |            | 40.0%  |

Southern "Lady Trojans" vs Ohio County "Lady Eagles"  
1st Half Play by Play

Tip off at 10:00 a.m. on 03/26/88 at State Tourney, Frankfort  
Produced by the K.H.S.A.A. Stat Crew with (FINAL III)\*\*

PAGE : 1

| Player  | Team  | Ohio County             | Time   | Score                                      | Southern   | Player | Team  |
|---|-------|-------------------------|--------|--|--|--------|-------|
| Burden, Donna, Whitten, Steph., Hawes, Kerri, Carter, Missy, Riley, Debra |       |                         |        |  | Harrison, Lisa, Collins, Cindy, Moore, Mioshi, Burden, Michelle, Woods, Tina |        |       |
|   |       |                         | 1 6:37 | 0-2*                                       | Ball to Lady Trojans   |        |       |
|   |       |                         | 1 6:08 | 0-4*                                       | 14 ft Right Base Line Turnaround by Harrison, Lisa                           | 1-1    | 100%  |
|   |       |                         | 1 5:58 |  | 8 ft Right Side Turnaround by Harrison, Lisa                                 | 1-1    | 100%  |
| 1   | 1     | Foul on Hawes, Kerri    | 1 5:32 | 0-6*                                       | 14 ft Lane Jump shot by Burden, Michelle                                     | 1-1    | 100%  |
|   |       |                         | 1 5:11 |  | Assist by Harrison, Lisa   | 1      | 1     |
|   |       |                         | 1 4:55 | 0-8*                                       | Foul on Burden, Michelle   | 1      | 1     |
|   |       |                         | 1 4:36 | *2-8                                       | Layup Off Fast Break by Collins, Cindy                                       | 1-1    | 100%  |
| 1-2   | 50.0% | 1-5                     | 20.0%  | 6 ft Lane Follow by Hawes, Kerri           | Assist by Burden, Michelle   | 1      | 2     |
|   |       |                         | 1 4:19 | 2-10*                                      | 6 ft Left Base Line Driving by Harrison, Lisa                                | 3-3    | 100%  |
|   |       |                         | 1 4:04 |  | Foul on Collins, Cindy   | 1      | 2     |
| 0-2   | 00.0% | 0-2                     | 00.0%  | Whitten, Steph., 2 Free Throws missed both |  |        |       |
|   |       |                         | 1 4:04 |  | 10 ft Lane Jump shot by Burden, Michelle                                     | 2-2    | 100%  |
|   |       |                         | 1 3:45 | 2-12*                                      | Layup Off Fast Break by Woods, Tina  | 1-1    | 100%  |
|   |       |                         | 1 3:30 | 2-14*                                      | Assist by Harrison, Lisa   | 2      | 3     |
|   |       |                         | 1 3:26 |  |  |        |       |
|   |       |                         |        |  | REB: 2 A: 0 BLK: 0 TO: 3 PF: 1   |        |       |
|   |       |                         |        |  | S: 0 FT: 0-2 00.0% FG: 1-5 20.0%   |        |       |
|   |       |                         |        |  | No. 1 Ohio County TIME - O U T   |        |       |
|   |       |                         | 1 3:13 |  | REB: 3 A: 3 BLK: 0 TO: 1 PF: 2   |        |       |
|   |       |                         | 1 3:13 | *4-14                                      | S: 1 FT: 0-0 00.0% FG: 7-7 100%  |        |       |
| 2-2   | 100%  | 2-4                     | 50.0%  | Carter, Missy, 2 Free Throws made both     | Foul on Moore, Mioshi  | 1      | 3     |
|   |       |                         | 1 3:05 | 4-15*                                      | 6 ft Lane Turnaround by Harrison, Lisa                                       | 4-4    | 100%  |
|   |       |                         | 1 2:54 | *6-16                                      | Assist by Woods, Tina  | 1      | 4     |
| 2-3   | 66.6% | 2-7                     | 28.5%  | Follow Layup by Hawes, Kerri               | 8 ft Lane Turnaround by Harrison, Lisa                                       | 5-5    | 100%  |
|   |       |                         | 1 2:24 | 6-18*                                      | Assist by Woods, Tina  | 2      | 5     |
|   |       |                         | 1 2:08 |  |  |        |       |
| 1   | 2     | Foul on Riley, Debra    | 1 2:08 | 6-19*                                      | Collins, Cindy, 2 Free Throws missed 1st made 2nd                            | 1-2    | 50.0% |
| 1   | 3     | Foul on Burden, Donna   | 1 1:45 |  |  |        |       |
| 2   | 4     | Foul on Riley, Debra    | 1 0:52 |  |  |        |       |
|   |       |                         | 1 0:42 |  | Foul on Woods, Tina  | 1      | 4     |
| 3-5   | 60.0% | 3-10                    | 30.0%  | 9 ft Left Side Jump shot by Hawes, Kerri   |  |        |       |
| 1   | 1     | Assist by Burden, Donna | 1 0:01 | *8-19                                      |  |        |       |

Southern "Lady Trojans" vs Ohio County "Lady Eagles"  
1st Half Play by Play

Tip off at 10:00 a.m. on 03/26/88 at State Tourney, Frankfort  
Produced by the K.H.S.A.A. Stat Crew with FINAL III™

PAGE : 2

Player Team Ohio County  
Burden, Donna, Whitten, Steph., Hawes, Kerri, Carter, Missy, Riley, Debra

| Time   | Score  | Southern   | Player | Team                            |
|--------|--------|--|--------|---------------------------------|
|        |        | Harrison, Lisa, Collins, Cindy, Moore, Mioshi, Burden, Michelle, Woods, Tina<br>Ball to Lady Trojans |        |                                 |
| 2 7:50 | 8-21*  | 4 ft Lane Bank by Moore, Mioshi<br>Assist by Collins, Cindy  | 1-1    | 100% 10-11 90.9%<br>1 6         |
| 2 6:21 | 8-23*  | 13 ft Left Side Jump shot by Collins, Cindy<br>Assist by Harrison, Lisa                              | 2-2    | 100% 11-13 84.6%<br>3 7         |
| 2 6:10 |        |  |        |                                 |
| 2 6:10 |        | Moore, Mioshi, 1 & Bonus missed 1st  | 0-1    | 00.0% 1-3 33.3%                 |
| 2 5:51 | *10-23 |  |        |                                 |
| 2 5:02 | *12-23 |  |        |                                 |
| 2 4:49 | 12-25* | 16 ft Left Base Line Jump shot by Collins, Cindy   | 3-3    | 100% 12-16 75.0%                |
| 2 3:59 | 12-27* | 6 ft Left Base Line Turnaround by Moore, Mioshi<br>Assist by Collins, Cindy                          | 2-2    | 100% 13-17 76.4%<br>2 8         |
| 2 3:19 | *14-27 |  |        |                                 |
| 2 3:00 |        | Sub In: Grant, Steph. Out: Collins, Cindy  |        |                                 |
| 2 3:00 |        | Sub In: Andres, Kim Out: Woods, Tina   |        |                                 |
| 2 2:56 |        |  |        |                                 |
| 2 2:56 | 14-28* | Grant, Steph., 2 Free Throws missed 1st made 2nd   | 1-2    | 50.0% 2-5 40.0%                 |
| 2 2:50 | 14-30* | 15 ft Lane Jump shot by Harrison, Lisa   | 6-9    | 66.6% 14-20 70.0%               |
| 2 2:27 | *16-30 |  |        |                                 |
| 2 1:50 |        | Foul on Grant, Steph.  | 1      | 5                               |
| 2 1:50 |        | Sub In: Collins, Cindy Out: Moore, Mioshi  |        |                                 |
| 2 1:50 |        |  |        |                                 |
| 2 1:39 | 16-32* | 6 ft Lane Turnaround by Harrison, Lisa<br>Assist by Grant, Steph.                                    | 7-10   | 70.0% 15-22 68.1%<br>1 9<br>2 6 |
| 2 1:07 |        | Foul on Grant, Steph.  |        |                                 |
| 2 1:07 |        |  |        |                                 |
| 2 1:07 | *18-32 |  |        |                                 |
| 2 0:50 | 18-34* | 12 ft Left Base Line Jump shot by Harrison, Lisa<br>Assist by Collins, Cindy                         | 8-11   | 72.7% 16-23 69.5%<br>3 10       |
| 2 0:07 | 18-35* | 12 ft Right Side Jump shot by Harrison, Lisa<br>Assist by Burden, Michelle                           | 9-12   | 75.0% 17-24 70.8%<br>2 11       |

2 5 Foul on Hawes, Kerri  
Sub In: Burdin, Rachael Out: Riley, Debra

4-8 50.0% 4-17 23.5% Follow Layup by Hawes, Kerri  
1-6 16.6% 5-18 27.7% Layup Off Fast Break by Burden, Donna  
1 2 Assist by Burdin, Rachael

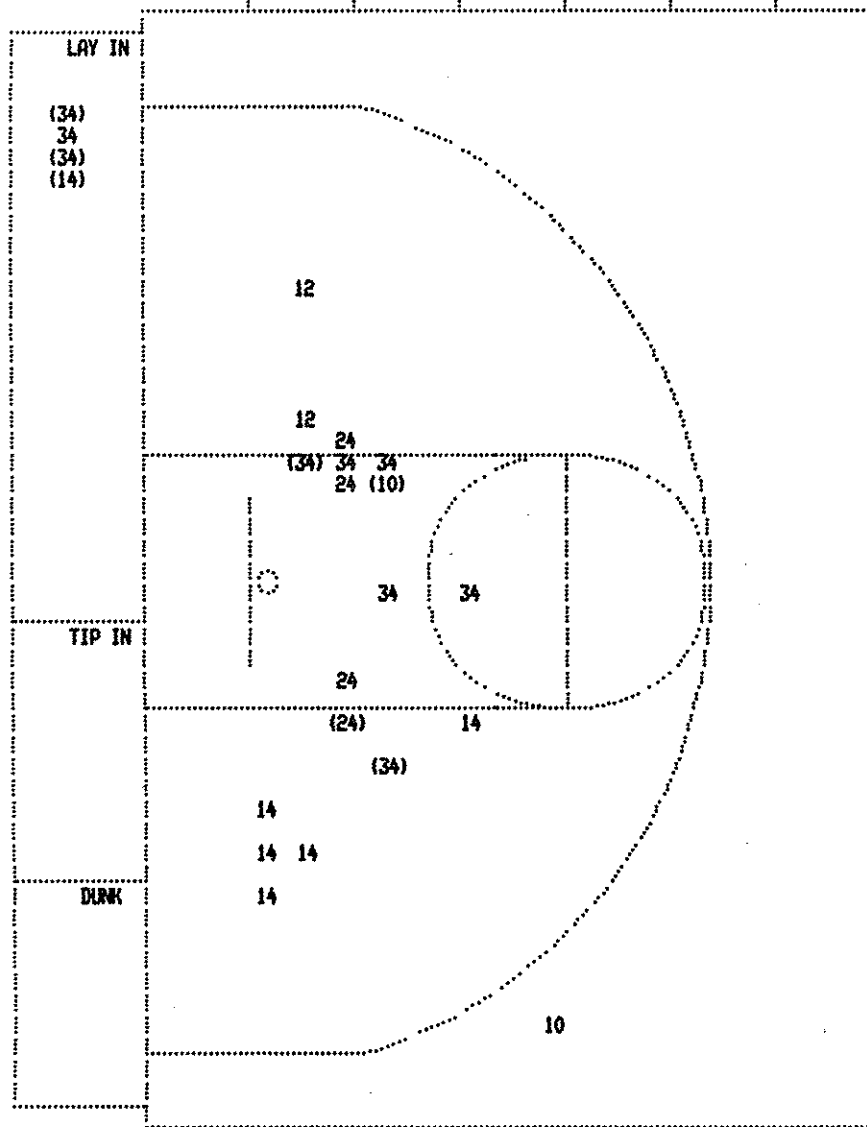
1-1 100% 6-19 31.5% 7 ft Lane Bank by Carter, Missy

2 6 Foul on Burden, Donna  
Sub In: Riley, Debra Out: Burdin, Rachael

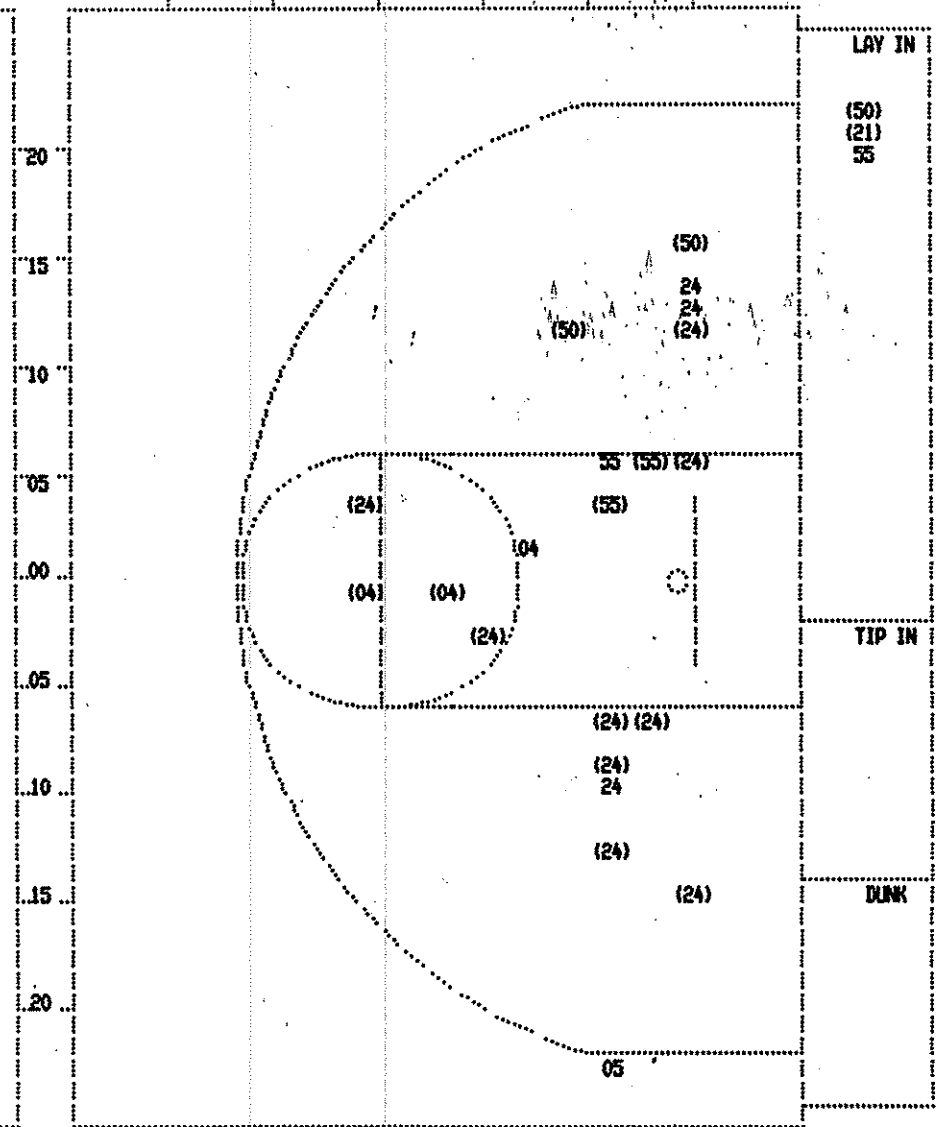
1-3 33.3% 7-21 33.3% 6 ft Left Side Bank by Whitten, Steph.  
2 3 Assist by Burden, Donna

0-1 00.0% 2-5 40.0% Burden, Donna, 1 & Bonus missed 1st

4-4 100% 4-7 57.1% Sub In: Johnson, M. Out: Hawes, Kerri  
Carter, Missy, 2 Free Throws made both



| Ohio County     |        |          |            | Player     |       |  |  |
|-----------------|--------|----------|------------|------------|-------|--|--|
| 14 - Burden, Do | 1 / 6  | 16.6%    |            |            |       |  |  |
| 24 - Whitten, S | 1 / 4  | 25.0%    |            |            |       |  |  |
| 34 - Hawes, Ker | 4 / 9  | 44.4%    |            |            |       |  |  |
| 10 - Carter, Mi | 1 / 2  | 50.0%    |            |            |       |  |  |
| 12 - Riley, Deb | 0 / 2  | 0.0%     |            |            |       |  |  |
| Layups          | 1-9 Ft | 10-15 Ft | Over 15 Ft | 3 Pointers | Total |  |  |
| 3 / 4           | 4 / 12 | 0 / 6    | 0 / 1      | 7 / 23     |       |  |  |
| 75.0%           | 33.3%  | 0.0%     | 0.0%       | 30.4%      |       |  |  |



| Southern         |        |          |            | Player     |         |  |  |
|------------------|--------|----------|------------|------------|---------|--|--|
| 24 - Harrison,   | 9 / 12 | 75.0%    |            |            |         |  |  |
| 50 - Collins, C  | 3 / 3  | 100.0%   |            |            |         |  |  |
| 55 - Moore, Mio  | 2 / 4  | 50.0%    |            |            |         |  |  |
| 04 - Burden, Mic | 2 / 3  | 66.6%    |            |            |         |  |  |
| 21 - Woods, Tin  | 1 / 1  | 100.0%   |            |            |         |  |  |
| Layups           | 1-9 Ft | 10-15 Ft | Over 15 Ft | 3 Pointers | Total   |  |  |
| 2 / 3            | 7 / 10 | 7 / 9    | 1 / 1      | 0 / 1      | 17 / 24 |  |  |
| 66.7%            | 70.0%  | 77.8%    | 100.0%     | 0.0%       | 70.8%   |  |  |

BOX SCORE: \* OFFICIAL FIRST HALF \* Date: 03-26-88 Site: State Tourney, Frankfort Attendance:

Team: Southern

| NO.    | NAME             | TOTAL FG |     | 3-POINT |     | FT | FTA | REB |   |    | PF | TP | A  | TO | BLK | S | MIN |
|--------|------------------|----------|-----|---------|-----|----|-----|-----|---|----|----|----|----|----|-----|---|-----|
|        |                  | FG       | FGA | FG      | FGA |    |     | O   | D | T  |    |    |    |    |     |   |     |
| 24     | Harrison, Lisa   | 9        | 12  | 0       | 0   | 0  | 0   | 0   | 5 | 5  | 0  | 18 | 3  | 1  | 1   | 3 | 16  |
| 50     | Collins, Cindy   | 3        | 3   | 0       | 0   | 1  | 2   | 0   | 3 | 3  | 1  | 7  | 3  | 2  | 1   | 0 | 15  |
| 55     | Moore, Mioshi    | 2        | 4   | 0       | 0   | 0  | 1   | 0   | 0 | 0  | 1  | 4  | 0  | 0  | 0   | 0 | 14  |
| 04     | Burden, Michelle | 2        | 3   | 0       | 0   | 0  | 0   | 1   | 0 | 1  | 1  | 4  | 2  | 0  | 0   | 2 | 16  |
| 21     | Woods, Tina      | 1        | 1   | 0       | 0   | 0  | 0   | 0   | 1 | 1  | 1  | 2  | 2  | 2  | 0   | 2 | 13  |
| 34     | Grant, Steph.    | 0        | 0   | 0       | 0   | 1  | 2   | 1   | 0 | 1  | 2  | 1  | 1  | 0  | 0   | 0 | 3   |
| 05     | Andres, Kim      | 0        | 1   | 0       | 1   | 0  | 0   | 0   | 0 | 0  | 0  | 0  | 0  | 0  | 1   | 3 |     |
| TEAM   |                  |          |     |         |     |    |     |     |   |    |    |    |    |    |     |   |     |
| TOTALS |                  | 17       | 24  | 0       | 1   | 2  | 5   | 2   | 9 | 11 | 6  | 36 | 11 | 5  | 2   | 8 | 80  |

|              |           |    |        |       |       |      |      |    |      |       |
|--------------|-----------|----|--------|-------|-------|------|------|----|------|-------|
| Percentages: | HALF----- | FG | 17/ 24 | 70.8% | 3-PT. | 0/ 1 | 0.0% | FT | 2/ 5 | 40.0% |
|              | Period 1  |    | 9/ 10  | 90.0% |       | 0/ 0 | 0.0% |    | 1/ 2 | 50.0% |
|              | Period 2  |    | 8/ 14  | 57.1% |       | 0/ 1 | 0.0% |    | 1/ 3 | 33.3% |

Team: Ohio County

| NO.    | NAME            | TOTAL FG |     | 3-POINT |     | FT | FTA | REB |   |    | PF | TP | A | TO | BLK | S | MIN |
|--------|-----------------|----------|-----|---------|-----|----|-----|-----|---|----|----|----|---|----|-----|---|-----|
|        |                 | FG       | FGA | FG      | FGA |    |     | O   | D | T  |    |    |   |    |     |   |     |
| 14     | Burden, Donna   | 1        | 6   | 0       | 0   | 0  | 1   | 1   | 2 | 3  | 2  | 2  | 2 | 3  | 0   | 3 | 16  |
| 24     | Whitten, Steph. | 1        | 4   | 0       | 0   | 0  | 2   | 2   | 1 | 3  | 0  | 2  | 0 | 2  | 0   | 0 | 16  |
| 34     | Hawes, Kerri    | 4        | 9   | 0       | 0   | 0  | 0   | 4   | 0 | 4  | 2  | 8  | 0 | 0  | 0   | 0 | 15  |
| 10     | Carter, Missy   | 1        | 2   | 0       | 1   | 4  | 4   | 0   | 0 | 0  | 0  | 6  | 0 | 4  | 0   | 1 | 16  |
| 12     | Riley, Debra    | 0        | 2   | 0       | 0   | 0  | 0   | 0   | 0 | 0  | 2  | 0  | 0 | 2  | 0   | 0 | 13  |
| 42     | Burdin, Rachael | 0        | 0   | 0       | 0   | 0  | 0   | 0   | 2 | 2  | 0  | 0  | 1 | 1  | 0   | 0 | 3   |
| 54     | Johnson, M.     | 0        | 0   | 0       | 0   | 0  | 0   | 0   | 0 | 0  | 0  | 0  | 0 | 0  | 0   | 0 | 1   |
| TEAM   |                 |          |     |         |     |    |     |     |   |    |    |    |   |    |     |   |     |
| TOTALS |                 | 7        | 23  | 0       | 1   | 4  | 7   | 7   | 7 | 14 | 6  | 18 | 3 | 13 | 0   | 4 | 80  |

|              |           |    |       |       |       |      |      |    |      |       |
|--------------|-----------|----|-------|-------|-------|------|------|----|------|-------|
| Percentages: | HALF----- | FG | 7/ 23 | 30.4% | 3-PT. | 0/ 1 | 0.0% | FT | 4/ 7 | 57.1% |
|              | Period 1  |    | 3/ 10 | 30.0% |       | 0/ 0 | 0.0% |    | 2/ 4 | 50.0% |
|              | Period 2  |    | 4/ 13 | 30.8% |       | 0/ 1 | 0.0% |    | 2/ 3 | 66.7% |

OFFICIALS: Jackie Cupp, Tom Thompson, Alt.-K. Walker  
 Technicals: None

|                  |    |         |
|------------------|----|---------|
| SCORE BY PERIODS |    |         |
| Southern         | 19 | 17 = 36 |
| Ohio County      | 8  | 10 = 18 |

Produced by the K.H.S.A.A. Stat Crew with FINAL III™